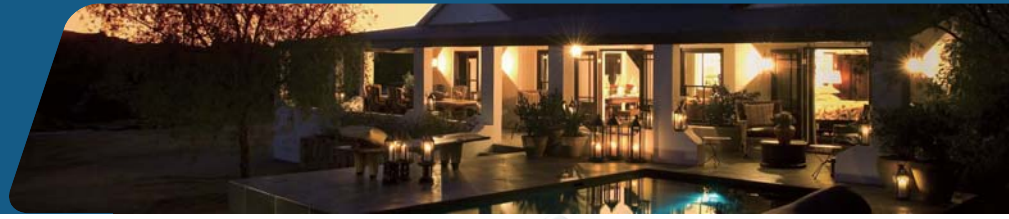


DHY8500SE-3

Diesel Generator 6.9~7.9 KVA
Portable Soundproof Type



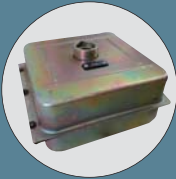
Diesel Engine
Single cylinder,
vertical, 4-stroke,
air-cooled



Soundproof and rainproof
canopy compact design



New AVR Regulation
for full loads application



15L standard fuel tank
25L fuel tank optional



Remote control module plug
inside the control panel,
metal hand controller
ensures max. to 100M
distance controlling



ATS Box



Three Phase LED3



Three Phase LED5

Control Panel

- Voltage
- Frequency
- Current
- Power output
- Hours meter
- ATS
- Remote control ...

GENERATOR		DHY8500SE-3
Frequency	Hz	50
Rated Power		6.9 kva
Max. Power		7.9 kva
Voltage	V	127 / 220
Current	A	20.7
Plugs		16A & 32A
Display		LED5/LED3
Fuel tank capacity	L	13
Running time @75% load	H	9.5
Sound level @ 7m	dBA	72
DC output	V/A	12 / 8.3
Battery	V/Ah	12 / 30
ENGINE		D500E
Engine type		Diesel
Power	hp	12
Start		Electric
Displacement	CC	498
Oil Capacity	L	1.75
ALTERNATOR		AL6-3
Power	Kw	6
Power Factor		0.8
Voltage Regulation		Brush / AVR
DIMENSIONS & WEIGHT		
Net Weight	Kg	154.5
Gross Weight	Kg	162.5
machine size	mm	920×520×740
Dimensions Package	mm	960×560×790
Loading Capacity FCL20'/40'HQ		48/144